

ESI[tronic]

News 2026 | 2

- **ESI[tronic]**
 - Keeping Your Diagnostics Secure: SDA Now Includes New Brands
 - Improved Touch Usability for Easier Operation
 - Customise Your Workflow with Your Own Weblinks
- **ESI[tronic] Truck News**
 - Truck Highlights



Keeping Your Diagnostics Secure: SDA Now Includes New Brands

As an ESI[tronic] user, you have been able to access protected vehicle diagnostics data using Secure Diagnostic Access (SDA) since 2021. This solution now covers more than 20 car manufacturers and is continuously being developed further. With the ongoing evolution of vehicle manufacturers' security concepts, it is crucial that our system adapts.

With the 2026/2 update, ESI[tronic] will receive important updates to ensure you continue to have seamless and unrestricted access to MAN and Ford badged vehicles.

With these enhancements, Bosch continues to meet the latest safety standards, ensuring that your workshop can operate smoothly without interruption.

An overview of vehicle manufacturers available via SDA (Country restrictions may apply):

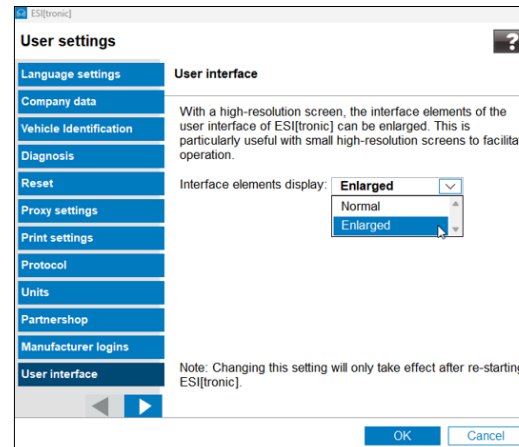
- **Abarth**
- **Alfa Romeo**
- **Audi**
- **Chrysler**
- **Cupra**
- **Dacia**
- **Dodge/RAM**
- **Fiat**
- **Ford (NEW! Ford Tourneo Connect)**
- **Hyundai**
- **Jeep**
- **Kia**
- **Lancia**
- **MAN (NEW!)**
- **Mercedes-Benz**
- **Nissan**
- **Polestar**
- **Porsche**
- **Renault**
- **Seat**
- **Skoda**
- **Subaru**
- **Suzuki**
- **Tesla**
- **Volkswagen**
- **Volvo**

Improved Touch Usability for Easier Operation

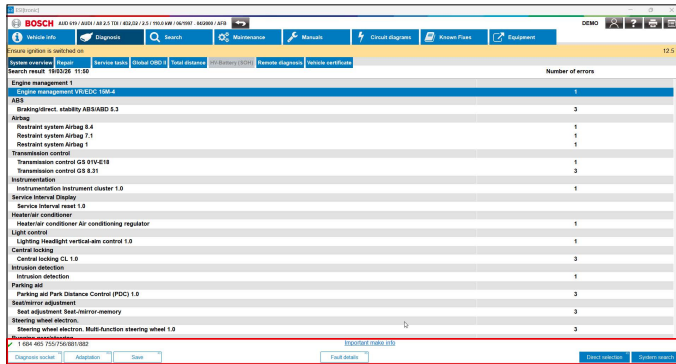


Many of you are already familiar with the "Enlarged" mode in ESI[tronic]. While this feature has been available for some time, it has now been overhauled in order to improve touch usability. Previously, some buttons could be difficult to use on tablets. Now, the "Enlarged" mode is the key to unlocking a new, touch-optimised experience. By activating this existing function, you will find that the buttons are now significantly larger and better placed, making navigation faster and more intuitive. This enhancement makes your diagnostic process smoother and more comfortable, especially when you are on the move in the workshop. To benefit from this new touch usability, simply ensure the "Enlarged" mode is active. How to activate:

1. Go to the main menu and select "User settings".
2. Click on "User interface".
3. Choose the "Enlarged" mode to activate the touch-optimised view.



Improved Touch Usability for Easier Operation

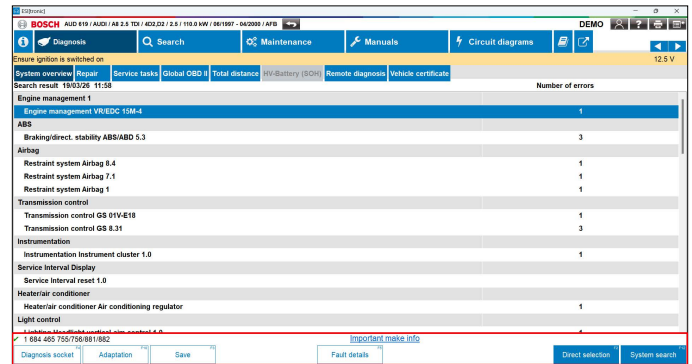
Vehicle info: AUDI A9 / AUDI / AB 2.5 TFS / 402/02 / 2.5 / 110.0 kW / 1501997 / 040980 / AB9

Search result: 18/03/26 11:52

System overview	Repair	Service tasks	Global OBD II	Total distance	VV-Battery (PCM)	Remote diagnosis	Vehicle certificate	Number of errors
Engine management 1								1
Engine management VR-EDC 15M-4								1
ABS								3
Braking/direct. stability ABS/ABD 5.3								3
Airbag								1
Restraint system Airbag 8.4								1
Restraint system Airbag 1.1								1
Restraint system Airbag 7.1								1
Transmission control								1
Transmission control GS 01V-E18								1
Transmission control GS 8.31								3
Instrumentation								1
Instrumentation Instrument cluster 1.0								1
Service Interval Display								1
Service Interval reset 1.0								1
Heater/air conditioner								1
Heater/air conditioner Air conditioning regulator								1
Light control								1
Lighting Headlight vertical-aim control 1.0								1
Central locking								3
Central locking CL 1.0								3
Intrusion detection								1
Intrusion detection								3
Parking aid								3
Parking aid Park Distance Control (PDC) 1.0								3
Seat/interior adjustment								3
Seat adjustment Seat-Interior memory								3
Steering wheel electric								3
Steering wheel electric, Multi-Function steering wheel 1.0								3

1 684 465 755/756/881/882

Diagnosis socket | Adaptation | Save | Fault details | Card selection | System search



Vehicle info: AUDI A9 / AUDI / AB 2.5 TFS / 402/02 / 2.5 / 110.0 kW / 1501997 / 040980 / AB9

Search result: 18/03/26 11:55

System overview	Repair	Service tasks	Global OBD II	Total distance	VV-Battery (PCM)	Remote diagnosis	Vehicle certificate	Number of errors
Engine management 1								1
Engine management VR-EDC 15M-4								1
ABS								3
Braking/direct. stability ABS/ABD 5.3								3
Airbag								1
Restraint system Airbag 8.4								1
Restraint system Airbag 1.1								1
Restraint system Airbag 7.1								1
Transmission control								1
Transmission control GS 01V-E18								1
Transmission control GS 8.31								3
Instrumentation								1
Instrumentation Instrument cluster 1.0								1
Service Interval Display								1
Service Interval reset 1.0								1
Heater/air conditioner								1
Heater/air conditioner Air conditioning regulator								1
Light control								1
Lighting Headlight vertical-aim control 1.0								1

1 684 465 755/756/881/882

Diagnosis socket | Adaptation | Save | Important make info | Fault details | Direct selection | System search

Customise Your Workflow with Your Own Weblinks



With the 2026/2 update, ESI[tronic] becomes even more flexible. A new configuration option allows users to adapt the software even more to the individual workflows in the workshop. The "Custom Links" function is activated by default for all ESI[tronic] licenses. After installing the 2026/2 update, the area is automatically displayed on the start screen. You can create and manage your own links there.

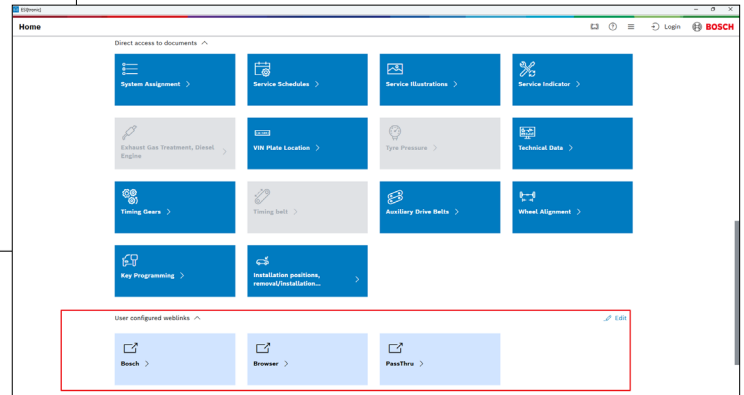
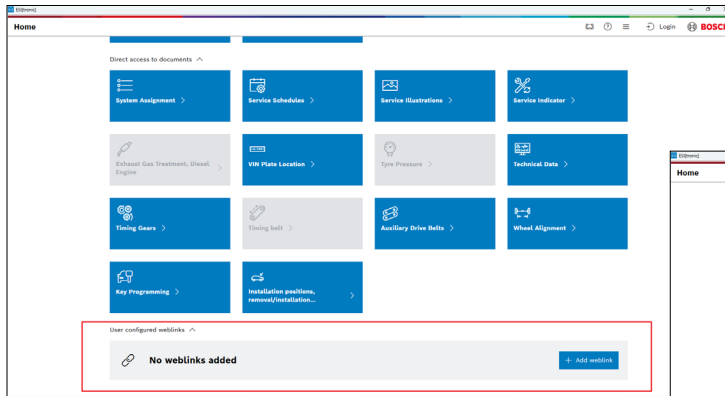
It allows you to integrate your workshop's daily tools and important websites directly into your diagnostic environment. Whether it's your parts supplier's portal, technical forums, or your own company website, you can create a direct link for quick access. This saves time and simplifies your workflow, as you no longer need to switch

between different applications to access web-based information. The function is designed for intuitive use, allowing you to easily add, edit, and arrange your weblinks as needed.

Your Benefits:

- **Save Time:** Access important web-based information directly from your diagnostic software.
- **Seamless Workflow:** Integrate external resources into your daily routine without switching between applications.
- **Easy Management:** Intuitively create, edit, and arrange your weblinks to best suit your needs.

Customise Your Workflow with Your Own Weblinks



ESI[tronic] Truck News

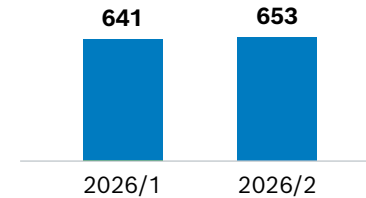
Truck Highlights



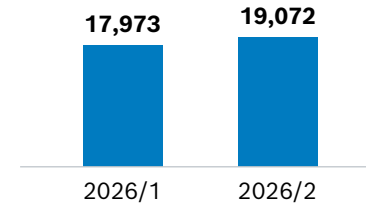
For our customers, the ESI[tronic] Update 2026/2 offers a significant expansion in truck coverage:

- 12 New makes
- 1,054 New models
- 5,751 New electronic control systems
- 2,589 New diagnostics capabilities
- 145 New wiring diagrams
- 37,967 New fault codes

Makes total



Models total



ESI[tronic] Truck News

Truck Highlights



Truck package

DAF: PCI-2 engine control system, diesel particulate filter replacement.

MERCEDES-BENZ: System developments in the new DoIP protocol in 2024 Actros and Arocs models.

RENAULT: In vehicles with V4 technology: EMS engine control system, AdBlue/DEF crystallisation maintenance. In vehicles with V3 technology: New VECU5 Service maintenance system which includes the resets of the engine oil change and the transmission oil change.

SCANIA: DIS3 distance sensor, calibration in New P, G, R and S Series SUPER, New R Series and S Series models of 16 liters.

IVECO: EDC MD1 engine control system, operation data.

TRAILER – WABCO: Development of the new E7 variant in the EBS E brake control system. iEBS brake control system, actuations and system checks. Component technical information and operating and wiring diagrams are included.



ESI[tronic] Truck News

Truck Highlights



Agricultural vehicles package (OHV 1)

CASE ICH: New EHR hydraulic system in the Magnum AFS Series – Full Power Shift (250/280/310/340/400) model, engine: Tier 5/Stage V.

SFA suspension system, technical release for suspension calibration in Maxxum Series 16/17x16 (Armrest) models, engine: Tier 3/Stage III, Maxxum Series – 16/17x16 (Armrest), engine: Interim Tier 4/Stage IIIB and Maxxum Series – 16/17x16 (Armrest), engine: Final Tier 4/Stage IV, among others.

MASSEY FERGUSON: New systems

NEW HOLLAND: EHR hydraulic system, identification code setting of the spool valve in the T7 PLM Series – Auto Command model, engine: Tier 5/Stage V, among others.

Construction vehicles and engines package (OHV 2)

DEUTZ: EMR4 EDC17 CV52 (on SAE J1939) engine control system, fault counter reset of the exhaust gas aftertreatment system in the diesel particulate filter and NO_x sensors.

ZF: New ZF EC3, EC4 Ergopower transmissions

VOLVO CE: EMS V3 Volvo Penta (on SAE J1939) engine control system, SCR catalytic converter cleaning process.

CATERPILLAR: CATERPILLAR C-2.2 (on SAE J1939) engine control system, operation data, activations, checks and maintenance operations.

ESI[tronic] Truck News

Truck Highlights



Material handling (OHV 3)

CLARK: New ZAPI PUMP and EPS power modules for retractable forklifts, stackers, pallet jacks, order-picking pallet trucks and electric counterbalanced forklifts, which include advanced diagnostics functions.

HYSTER: New LS Engine Controller engine control system for internal combustion counterbalanced forklifts, which include advanced diagnostics functions.

JUNGHEINRICH: New MCM2 central computer for DFG Series and TFG Series internal combustion forklifts.

Knorr-Bremse Add-On

KNORR-BREMSE ADDON: Launch ECUtalk for TEBS6 variants for Knorr-Bremse ADD-ON.

