



# ESI[tronic] Evolution

News 2025 | 1

- **ESI[tronic] Evolution:**
  - New Tesla Vehicle Diagnostics
  - Integration of the original Tesla fault finding, maintenance, and repair instructions
  - Original documents: Expansion of vehicle brands
  - Access to “Important make information” in diagnosis
- **ESI[tronic] Truck News**
  - Highlights for truck

# New Tesla Vehicle Diagnostics

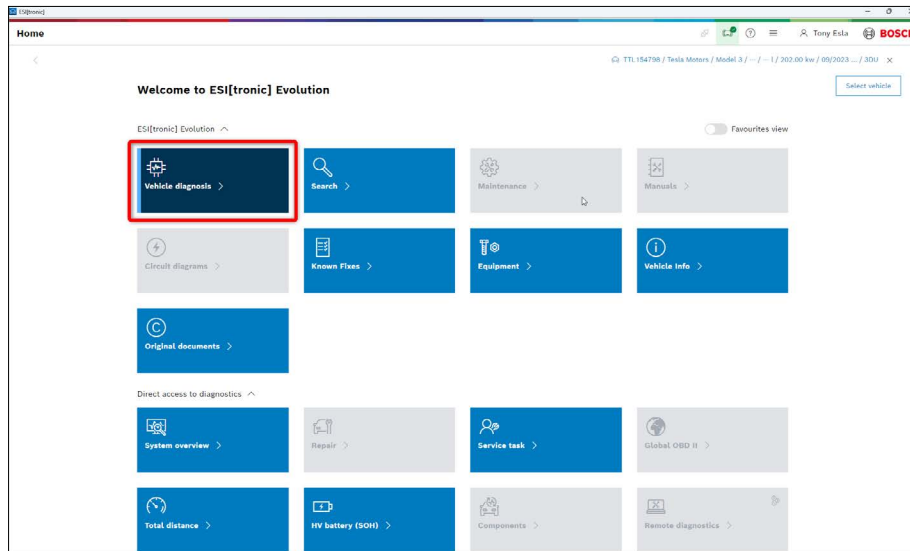


Workshops are increasingly encountering Tesla vehicles. Mechanics and technicians quickly realize that Tesla pursues different approaches in diagnosis and service tasks compared to traditional vehicle manufacturers. To assist in addressing this challenge, the ESI[tronic] Evolution now offers a new vehicle diagnosis for Tesla.

The ESI[tronic] Evolution has been specially adapted to the new Tesla vehicle architecture. Newer Tesla models are now equipped with a central computer that is responsible for all service and diagnostic issues in the vehicle and which the diagnostic software can access. This makes the ESI[tronic] Evolution the first diagnostic tool capable of performing all service and diagnostic tasks to the same extent as the manufacturer itself.

Communication with the vehicle can be established as usual using the KTS 560/590. However, depending on the model year, our Tesla adapter is required, as Tesla did not install a uniform diagnostic interface in its models before the 2024 model year. The new diagnostic concept provides an overview of all active errors (alerts) in the vehicle. The Functions tab contains all learning processes, self-tests, adjustments, test routines, and special functions that the vehicle can offer. All performed tasks can be saved and logged with the ESI[tronic] Evolution.

# New Tesla Vehicle Diagnostics

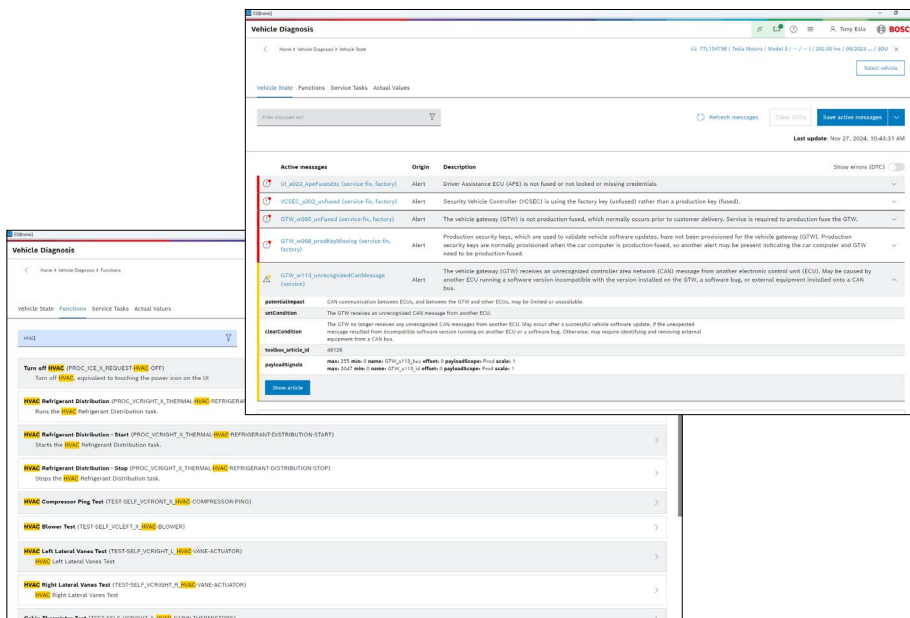


The integration of Tesla vehicle diagnosis into the ESI[tronic] Evolution is now available, providing workshops with the capability to diagnose and service even the most demanding vehicles. With the increasing number of Tesla vehicles on the roads, it is more important than ever for workshops to have the right diagnostic tools to offer their customers the best possible service.

# Integration of the original Tesla fault finding, maintenance, and repair instructions



With the introduction of Tesla diagnostics into ESI[tronic] Evolution, the original Tesla fault finding, maintenance, and repair instructions are now integrated into ESI[tronic] Evolution. This means that workshops and technicians now have direct access to Tesla's official instructions within a single application, and these are directly linked to the diagnostics, enabling precise and efficient diagnosis, maintenance, and repair.



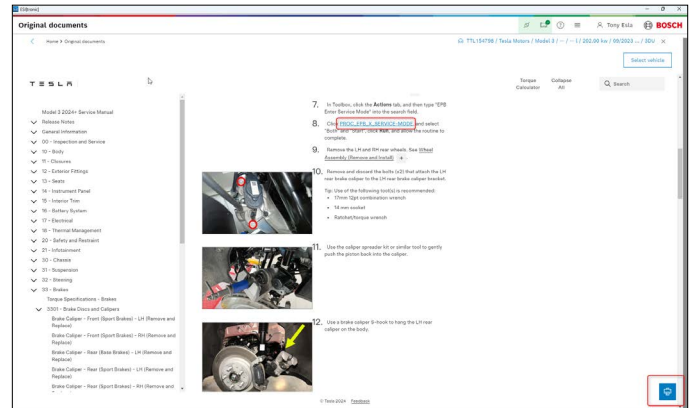
The screenshot displays the 'Vehicle Diagnosis' interface in ESI[tronic] Evolution. The top section shows 'Active messages' with a table of alerts:

Active messages	Origin	Description
U1_022_ApplFasendts (service file, factory)	Alert	Driver Assistance ECU (APEE) is not fused or not locked or missing credentials
V0SEC_0302_unfused (service file, factory)	Alert	Security Vehicle Controller (V0SEC) is using the factory key (unfused) rather than a production key (fused).
GTW_v050_unfused (service file, factory)	Alert	The vehicle gateway (GTW) is not production fused, which normally occurs prior to customer delivery. Service is required to production fuse the GTW.
GTW_v050_productionMissing (service file, factory)	Alert	Production security keys, which are used to validate vehicle software updates, have not been provisioned for the vehicle gateway (GTW). Production security keys are normally provisioned when the car computer is production fused, so another alert may be present indicating the car computer and GTW need to be production fused.
GTW_v011_unrecognizedCanMessage (service)	Alert	The vehicle gateway (GTW) receives an unrecognized controller area network (CAN) message from another electronic control unit (ECU). May be caused by another ECU running a software version incompatible with the version installed on the GTW, a software bug, or external equipment installed onto a CAN bus.

Below the messages, there is a section for 'Maintenance' tasks, including:

- Turn off [BMC] (PROC\_VCRIGHT\_A\_REQUEST) [GTW]**: Turn off [BMC] equivalent to touching the power icon on the UI
- Refrigerant Distribution (PROC\_VCRIGHT\_A\_THERMAL) [BMC] REFRIGERANT**: Run the [BMC] Refrigerant Distribution task
- Refrigerant Distribution - Start (PROC\_VCRIGHT\_A\_THERMAL) [BMC] REFRIGERANT DISTRIBUTION (START)**: Starts the [BMC] Refrigerant Distribution task
- Refrigerant Distribution - Stop (PROC\_VCRIGHT\_A\_THERMAL) [BMC] REFRIGERANT DISTRIBUTION (STOP)**: Stops the [BMC] Refrigerant Distribution task
- Compressor Ping Test (TEST\_SELF\_VCRIGHT\_A\_0302) COMPRESSOR (PING)**
- Blower Test (TEST\_SELF\_VCRIGHT\_A\_0302) (BLOWER)**
- Left Lateral Vanes Test (TEST\_SELF\_VCRIGHT\_A\_0302) (VANE ACTUATOR)**: Left Lateral Vanes Test
- Right Lateral Vanes Test (TEST\_SELF\_VCRIGHT\_A\_0302) (VANE ACTUATOR)**: Right Lateral Vanes Test
- Cabin Thermostat Test (TEST\_SELF\_VCRIGHT\_A\_0302) CABIN THERMOSTATS)**

# Integration of the original Tesla fault finding, maintenance, and repair instructions



# Original documents:

## Expansion of vehicle brands



This year, we are further developing the function of the original documents for you. We have optimized the layout for a user-friendly interface. This makes vehicle selection and operation of “Original documents” easier, regardless of whether you are working with a small device.

In addition, you now have access to the original manufacturer data of 16 renowned brands. This means that as an ESI[tronic] user with an Advanced or Master package, you not only have access to the proven content of SIS and P infotypes, but also to a variety of additional original data.

In the coming months, we will focus on brands from PSA to further support your workshop business.

Available brands at a glance:

- **Volkswagen**
- **Audi**
- **Fiat**
- **BMW**
- **Mini**
- **Rolls-Royce**
- **Skoda**
- **Seat**
- **Mercedes-Benz**
- **Renault**
- **Smart (excl. Smart#1/#3)**
- **Maybach**
- **Ford**
- **Dacia**
- **Alpine**
- **Cupra**

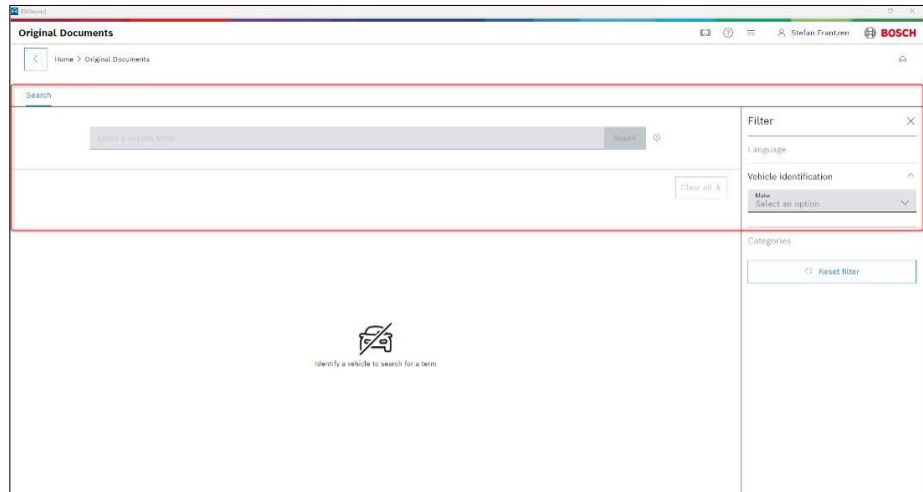
# Original documents:

## Expansion of vehicle brands

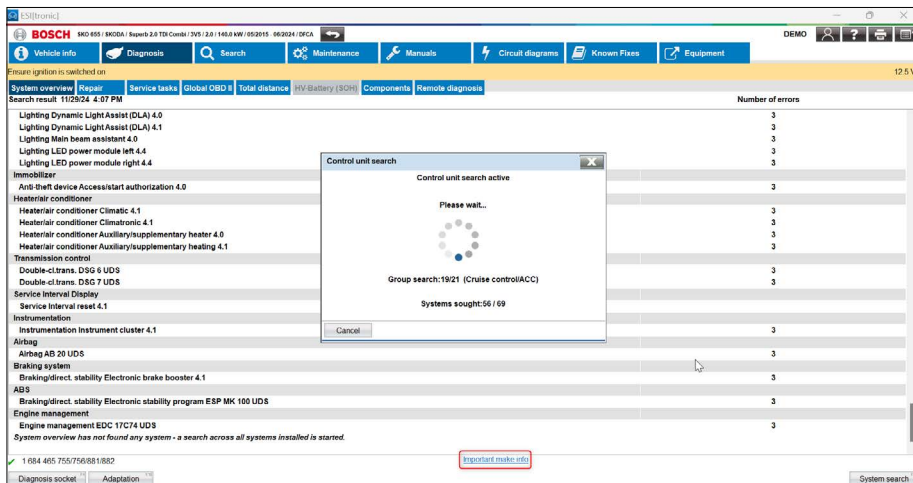


The “Original Documents” feature in ESI[tronic] Evolution allows you to perform professional and efficient maintenance and repair work in your workshop. You have access to the best information for your work at all times – quickly and reliably.

Please note that brand-specific country restrictions may apply to parts of the “Original Documents” feature.



# Access to “Important make information” in diagnosis

The screenshot shows the ESI[tronic] diagnostic software interface. The main window displays a list of diagnostic trouble codes (DTCs) and their counts. A dialog box titled "Control unit search" is open in the center, showing "Please wait..." and "Group search: 1921 (Cruise control/ACC)". At the bottom of the main window, a red box highlights the "Important make info" link.

DTC	Number of errors
Lighting Dynamic Light Assist (DLA) 4.0	3
Lighting Dynamic Light Assist (DLA) 4.1	3
Lighting Main beam assist 4.0	3
Lighting LED power module left 4.4	3
Lighting LED power module right 4.4	3
Immobilizer	
Anti-theft device Access/Start authorization 4.0	3
Heater/air conditioner	
Heater/air conditioner Climatic 4.1	3
Heater/air conditioner Climatronic 4.1	3
Heater/air conditioner Auxiliary/supplementary heater 4.0	3
Heater/air conditioner Auxiliary/supplementary heating 4.1	3
Transmission control	
Double-clutch, DSG 6 UDS	3
Double-clutch, DSG 7 UDS	3
Service Interval Display	
Service Interval reset 4.1	3
Instrumentation	
Instrumentation Instrument cluster 4.1	3
Airbag	
Airbag AB 20 UDS	3
Braking system	
Braking/direct stability Electronic brake booster 4.1	3
ABS	
Braking/direct stability Electronic stability program ESP MK 100 UDS	3
Engine management	
Engine management EDC 17C74 UDS	3

System overview has not found any system - a search across all systems installed is started.

1 684 465 755/756/81/82

Important make info

As part of our efforts to improve efficiency in using ESI[tronic], we have implemented an automatic system overview starting automatically when the diagnosis is entered. This saves you time as a user and allows you to work more efficiently with our diagnostic software ESI[tronic] Evolution.

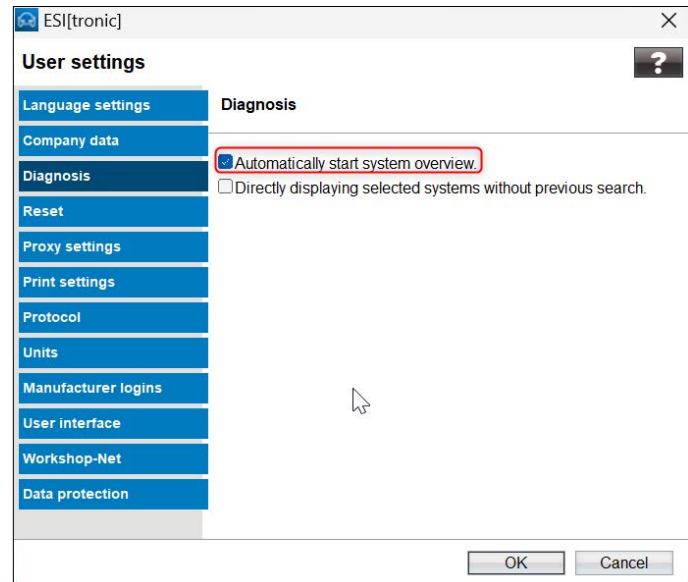
Due to this improvement, access to the “Important make information” link is no longer available through the diagnosis homepage. Instead, you can now find the link centrally located in the footer area.



# Access to “Important make information” in diagnosis



If preferred, you can easily deactivate the automatic scanning function with minimal effort. You can find the corresponding option in the main menu under User Settings → Diagnosis.



# ESI[tronic] Truck News

## Highlights for truck



### Truck package

- **DAF:** ECS4/ECS6 engine control system / ZF PowerLine transmission for LF Euro 6 models [2022-...]
- **Mercedes-Benz:** Wabco TCM 05T transmission for G211-12 / G 330-12 / G 291-12 / G 280-16 gearboxes in Actros 5 (963/964), Arocs 5 (964) and Atego 9BM951.5 Euro6 models
- **Iveco:** ASM AMK AirPro suspension control system in Daily [2021] models

### Agricultural vehicles package (OHV 1)

- **New models – Valtra:** BC 4800 / BC 5800 / BC 7800 / BC 8800 / BS 2517H / BS 3335H / R530
- **CLAAS:** CATERPILLAR C-4.4 / C-6.6, J1939 engine system, AdBlue/DEF dosing check in Lexion Series C5x, Avero Series 561 and Dominator Series models, among others

### Construction vehicles and engines package (OHV 2)

- **Doosan:** Engine control system DL06/DL08 Stage V
- **JCB:** DieselMax 448, Stage V (on SAE J1939) engine control system, activations, system checks, parameter configuration and maintenance reset

### Material handling (OHV 3)

- **Hyster:** Yanmar EDC engine control system in models of H Series families, operation data, activations and system checks
- **Linde:** New GCP engine control system for H Series forklifts