



## ESI[tronic] Evolution

News 2024 | 4

### • **ESI[tronic] Evolution:**

- Original documents – Overview of available brands
- Hybrid and Electric Vehicles – Comprehensive vehicle coverage for established and new vehicle brands
- High-voltage Battery State of Health (SOH)
- Simplified access to vehicle identification
- Further innovations within [ESI]tronic Software

### • **ESI[tronic] Truck News:**

- Original documents and experience-based repair (EBR) – now usable for Truck customers
- Bosch expands the diagnostic software ESI[tronic] Evolution with Knorr-Bremse Diagnostics Add-On
- New Makes, new models
- The new ESI[tronic] Truck / OHW start screen – Better overview and direct access



## Original documents: Overview of available brands (1)

The new “Original Documents” function is continuously being developed for you!

Currently, users already have access to the original manufacturer data of 11 brands:

- **Volkswagen**
- **Audi**
- **Fiat**
- **BMW**
- **Mini**
- **Rolls-Royce**
- **Skoda**
- **Ford**
- **Mercedes-Benz (WIS)**
- **Smart (excl. Smart#1 and #3)**
- **Maybach**

## Original documents: Overview of available brands (2)



The **Renault, Dacia** and **Alpine** brands will also follow this year.

The "Original Documents" function within the ESI[tronic] Evolution software further improves the possibility of professional and efficient maintenance and repair work in the workshop. Users have access to the best possible information on necessary work – reliably and quickly at hand.

The Original Documents feature may have brand-specific country restrictions.

# Hybrid and Electric Vehicles: Comprehensive vehicle coverage for established and new vehicle brands



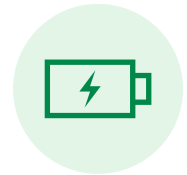
The growing number of hybrid and electric vehicles on the roads mean new challenges for automotive workshops. ESI[tronic] Evolution software supports workshops in working on the new drivetrains e.g. with an extensive vehicle coverage for control unit diagnostics. The ESI[tronic] Evolution software already covers more than 200 electric and hybrid vehicle model ranges. The relevant vehicle coverage is part of the regular control unit diagnostics (SD) license, meaning no additional license is required.

**Another advantage is that the vehicle coverage includes not only long-established vehicle brands, but also new Chinese electric vehicle manufacturers (COEM) such as MG, BYD, Polestar and others.**

ESI[tronic] Evolution users are thus perfectly prepared for current and future needs.

Since a high-voltage disconnection is mandatory for many tasks on electric and hybrid vehicles, ESI[tronic] Evolution also provides detailed vehicle-specific disconnection process instructions based on manufacturer specifications and data.

# High-voltage Battery State of Health (SOH)

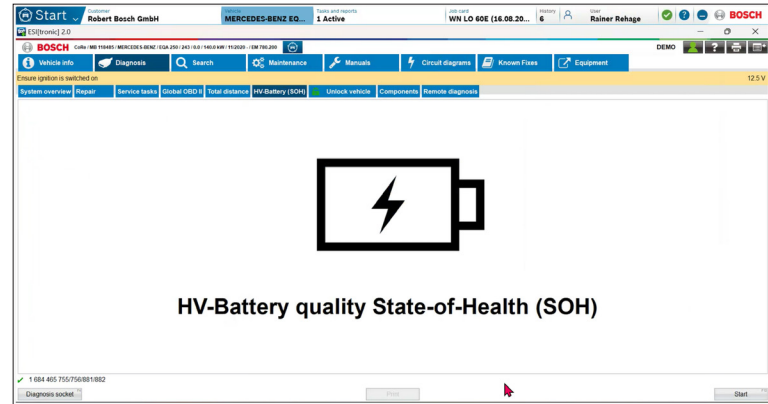
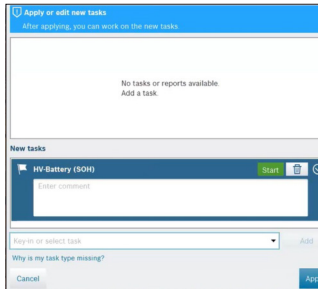
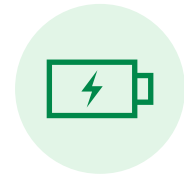


With the update 2024/4 of the ESI[tronic] Evolution, the HV-battery test task (SOH) is introduced in Bosch Connected Repair and the ESI[tronic] software.

For vehicles with a high-voltage battery it is possible to jump directly to the HV-Battery (SOH) tab in the ESI[tronic] from Connected Repair or a Dealer Management System (DMS) and determine the status of the high-voltage battery there.

As usual, the vehicle identification is automatically transferred from Connected Repair or the DMS to the ESI[tronic] software. After the task has been completed, the protocol is also transferred to Connected Repair and saved there.

# High-voltage Battery State of Health (SOH)



**ESI[tronic]**

ESI[tronic] Version 18.2.6353 8/16/24 1:23 PM

---

CoRe Cloud Testwerkstatt1  
Franz-Ochsle-Str. 14 73207 Plochingen

Robert Bosch GmbH Robert Bosch Str. 1 73201-Plochingen	<b>Order no.</b> : <b>Registration</b> : WN LO 60E <b>VIN</b> : 12345678901234567 <b>Mileage</b> : <b>First registrat.</b> : <b>Fitter</b> : Rainer Rehage <b>Telephone</b> : 0711 811-16987 <b>Fax</b> : 0711 8115072885
--	--

**Customer no.** :  
**Tel.(private)** :  
**Tel.(business)** :

MB 118485, MERCEDES-BENZ, EQA-Klasse [243], EQA  
 250, Electrical, 0.0, 140.0kw, 11/2020 -, EM 780.200,  
 Simulation mode

**HV battery quality (SOH) 20 %**

# Simplified access to vehicle identification

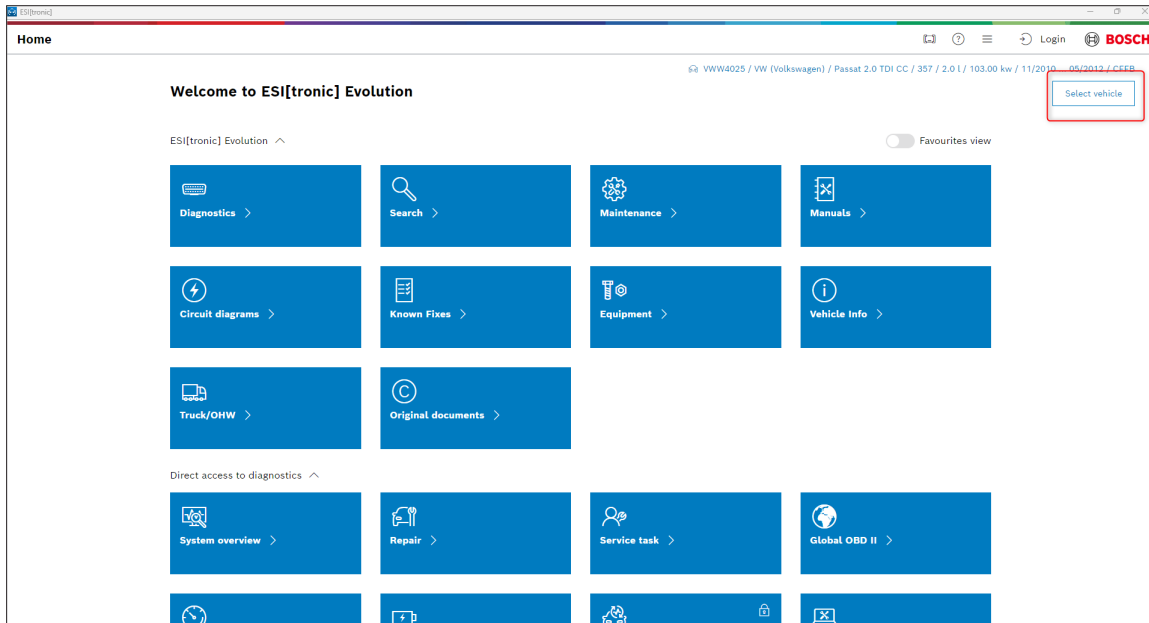


Based on your valuable feedback, an improvement for vehicle identification has been developed. A more user-friendly way to access the vehicle search will be available with the 2024/4 update. In addition to the previous button “Please identify a vehicle”, the additional button “Select vehicle” is now available. The added button, improves visibility, operation and also offers two possible uses.

When clicking on the selected vehicle name, the user is shown the last search performed including the search results list and the already selected vehicle is highlighted. If the user accidentally clicks on the wrong vehicle during selection, an alternative vehicle can be selected from the list of results without having to search again. In addition, a new search can be started directly via the search field.

If the user accidentally clicks on the wrong vehicle during selection, an alternative vehicle can be selected from the results list without having to search again. However, when the new <Select Vehicle> button is clicked, the existing vehicle selection is reset, and a new vehicle search can be started immediately in an unfilled search mask.

# Simplified access to vehicle identification



The screenshot displays the ESI[tronic] Evolution web application interface. The browser window title is "ESI[tronic]". The page header includes "Home" on the left and navigation icons (back, forward, search, login) on the right, with the Bosch logo. The main content area features a "Welcome to ESI[tronic] Evolution" message. Below this, the current vehicle information is shown: "VWV4025 / VW (Volkswagen) / Passat 2.0 TDI CC / 357 / 2.0 l / 103.00 kw / 11/2010 - 05/2012 / CEE". A red box highlights a "Select vehicle" button next to this information. The dashboard is organized into several sections: "ESI[tronic] Evolution" with a "Favourites view" toggle, a grid of 12 blue buttons for "Diagnostics", "Search", "Maintenance", "Manuals", "Circuit diagrams", "Known Fixes", "Equipment", "Vehicle Info", "Truck/OHW", and "Original documents", and a "Direct access to diagnostics" section with buttons for "System overview", "Repair", "Service task", and "Global OBD II". A bottom navigation bar contains icons for a clock, a document, a gear, a lock, and a document with a checkmark.



# Further innovations within ESI[tronic] Software



With the 2024/4 update, the ESI[tronic] diagnostic software has received a new logo. The design represents our further developments in terms of simplification and modernity within the software.

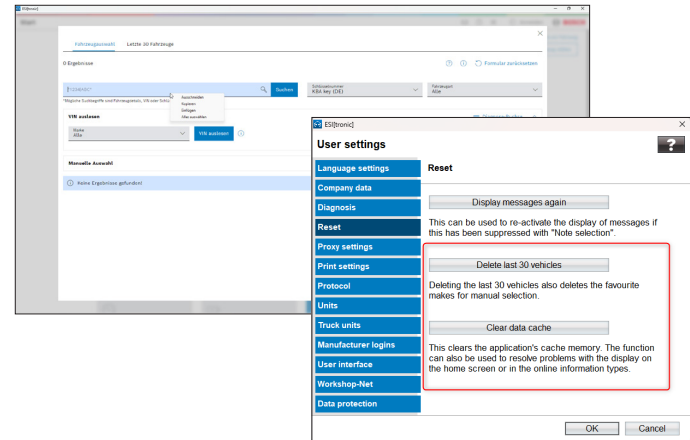
There is also a simplification within the vehicle selection. By right-clicking in the search field of the vehicle search, texts can now be pasted, copied or cut via a context menu. In the case of touch surfaces, you can reach the context menu by means of a so-called long press.

Furthermore, there is also an innovation in terms of data cache and “Last 30 vehicles”. With the 2024/4 update, the list of the last 30 vehicles or even the complete data cache can be deleted.

This function is particularly interesting for exam situations in order to create the same conditions for every user. But also

in various other cases, e.g. the deletion of the data cache (including the deletion of the last 30 vehicles) helps.

These functions can be found in the main menu under <User Settings> → <Reset>.



# Original documents and experience-based repair (EBR) – now usable for Truck customers



Attractive brand coverage for light commercial vehicles.

With the **2024/4 update, two entirely new features** will be introduced for ESI[tronic] Truck. Those who want to carry out maintenance and repair work in the workshop professionally and efficiently need the best possible information on the respective work steps reliably and quickly at hand.

The **ESI[tronic] Evolution** includes the **“Original Documents”** and **“Known Fixes”** functions as separate tiles directly on the start screen.

## **Original Documents**

These functions provide the user with all the information available to us from the vehicle manufacturer.

## **Experience-based repair (EBR) / known Fixes**

With the help of EBRs, correct solutions can be found in a matter of seconds. Experience-based repair (EBR) consolidates recurring errors in multiple vehicle models into clear and concise datasets.

## **The Advantages**

The brand coverage is continuously expanding and is included in the Truck license.





# Bosch expands the diagnostic software ESI[tronic] Evolution with the package Knorr-Bremse Diagnostics Add-On



The software package **Knorr-Bremse Diagnostics Add-On** for diagnosis, maintenance, and repair of systems from Knorr-Bremse is now available. The software package is integrated into the ESI[tronic] Software and replaces the previous software packages NEO for Truck systems and ECUtalk for Trailer systems.

**The new license package Knorr-Bremse Diagnostics Add-On** complements the existing ESI[tronic] packages for **commercial vehicles (Truck), agricultural vehicles (OHV 1), construction vehicles and engines (OHV 2), and material handling (OHV 3)**. To use the Knorr-Bremse Diagnostics Add-On, the **commercial vehicles (Truck)** package is required.

More information about ESI[tronic] Evolution material handling – OHV 3 can be found at:

**ESI[tronic] Evolution für Truck & Off-Highway Fahrzeuge**

## Advantages:

- Familiar and easy operation through integration into ESI[tronic] software
- Original Knorr-Bremse diagnostic functions and documents
- Exclusive access to the latest Knorr-Bremse systems, such as iTEBS® X / EAC1+
- One tool for diagnosing truck, bus, and trailer systems



# ESI[tronic] Truck – New Makes, new models



With the update 2024/4 of the ESI[tronic] software is available:

- 9 New makes
- 364 New models
- 3,815 New electronic control units
- 2,703 New diagnostics capabilities
- 366 New wiring diagrams
- 29,195 New fault codes

# The new ESI[tronic] Truck / OHW starts screen – Better overview and direct access



With the update 2024/4, the ESI[tronic] Truck / OHW will be released with a modified start screen.

The user will only be shown the Truck / OHW relevant content. This provides a better overview on the start screen and direct links to the most important diagnostic functions and documents.

