

ESI[tronic] Evolution

News 2024 | 3

- **ESI[tronic] Evolution:**
 - Improved ECU diagnosis with the update 2024/3
 - Original documents: Expansion of vehicle brands
 - Secure Diagnostic Access (SDA) for Suzuki
 - Improving vehicle identification
 - Category order in favorites view can be customized
 - Coverage for brand new vehicles
- **ESI[tronic] Truck News**

ESI[tronic] Evolution

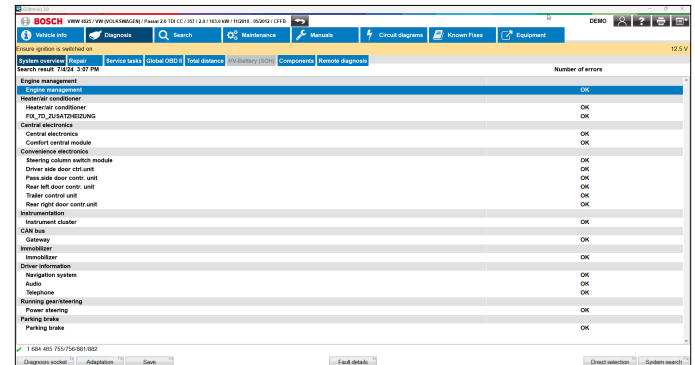
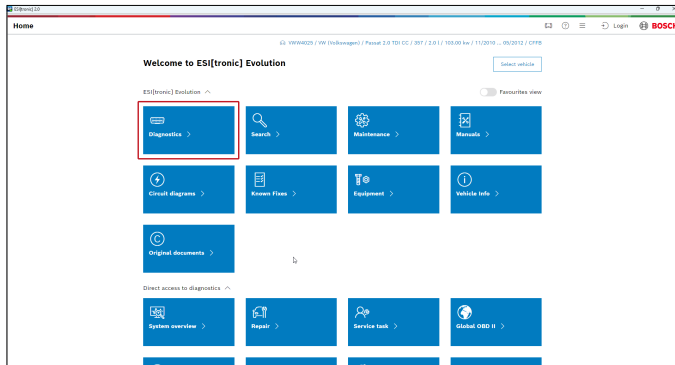
Improved ECU diagnosis with the update 2024/3



With the latest update, there is a significant change in accessing the ECU diagnosis. From now on, a comprehensive search is automatically performed, listing all installed systems and found fault memory entries. This offers the great advantage that only the systems actually assigned to the vehicle can be displayed and selected in ESI[tronic].

This prevents the selection of incorrect systems not assigned to the vehicle.

The well-known quick access via the tiles Repair and Service Task remains unaffected and is still possible without performing a comprehensive search.



ESI[tronic] Evolution

Original documents: Expansion of vehicle brands



Since the 2024/1 update, the new 'Original Documents' function has been available for users of the ESI[tronic] Evolution. This function is continuously being developed further and the brand coverage is therefore also constantly being expanded. With the 'Original Documents' function within the ESI[tronic] Evolution, the possibility of carrying out maintenance and repair work in the workshop professionally and efficiently is further improved. Users thus have access to the best possible information on the necessary work and have it reliably and quickly at hand.

Currently, users already have full access to the data of the following brands:

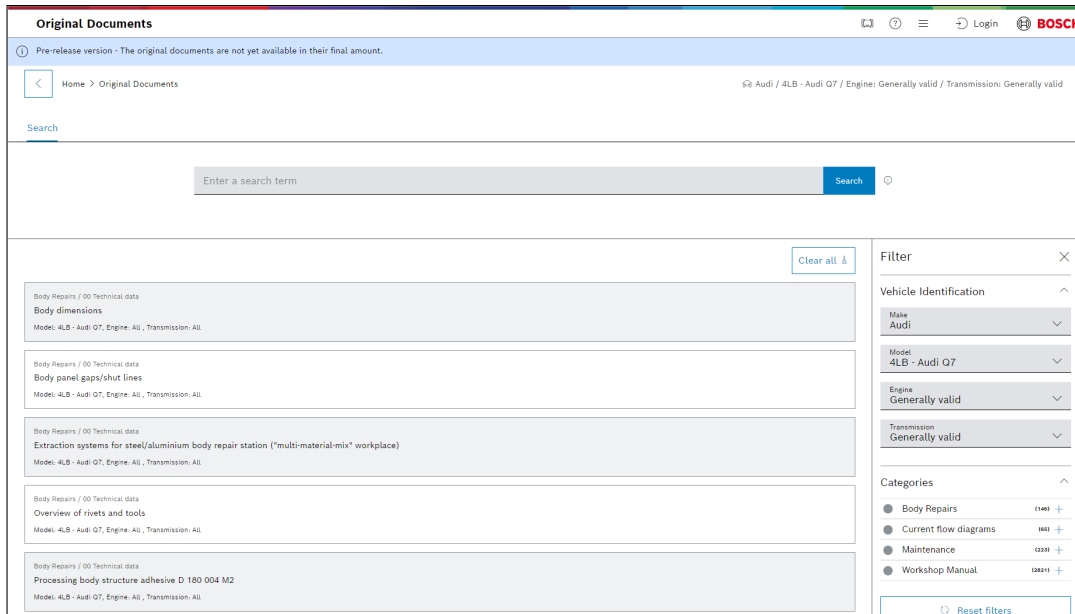
- **Volkswagen**
- **Audi**
- **Fiat**
- **BMW**
- **Mini**
- **Rolls-Royce**

Within the current year, the following brands will also be available:

- **Mercedes-Benz**
- **Smart**
- **Renault**
- **Ford**
- **Skoda**
- **Seat**

ESI[tronic] Evolution

Original documents: Expansion of vehicle brands



The screenshot shows the 'Original Documents' web interface. At the top, there is a navigation bar with the Bosch logo and a 'Login' button. Below the navigation bar, a blue banner displays a warning: 'Pre-release version - The original documents are not yet available in their final amount.' The main content area features a search bar with the placeholder text 'Enter a search term' and a 'Search' button. To the right of the search bar is a 'Clear all &' button. Below the search bar, there is a list of document entries, each with a title and model information. The entries are:

- Body Repairs / 00 Technical data
Body dimensions
Model: 4LB - Audi Q7, Engine: All, Transmission: All
- Body Repairs / 00 Technical data
Body panel gaps/shut lines
Model: 4LB - Audi Q7, Engine: All, Transmission: All
- Body Repairs / 00 Technical data
Extraction systems for steel/aluminium body repair station ("multi-material-mix" workplace)
Model: 4LB - Audi Q7, Engine: All, Transmission: All
- Body Repairs / 00 Technical data
Overview of rivets and tools
Model: 4LB - Audi Q7, Engine: All, Transmission: All
- Body Repairs / 00 Technical data
Processing body structure adhesive D 180 004 M2
Model: 4LB - Audi Q7, Engine: All, Transmission: All

On the right side of the interface, there is a 'Filter' panel. It includes a 'Vehicle Identification' section with dropdown menus for 'Make' (Audi), 'Model' (4LB - Audi Q7), 'Engine' (Generally valid), and 'Transmission' (Generally valid). Below this is a 'Categories' section with a list of categories and their counts: 'Body Repairs' (1146), 'Current flow diagrams' (165), 'Maintenance' (228), and 'Workshop Manual' (2851). A 'Reset filters' button is located at the bottom of the filter panel.

Brand-specific country restrictions may apply to the 'Original Documents' function.

ESI[tronic] Evolution

Secure Diagnostic Access (SDA) for Suzuki



Secure Diagnostic Access (SDA) is a central and integrated solution in the ESI[tronic] Evolution control unit diagnostic license (SD) that enables comprehensive access to protected vehicle data from participating vehicle manufacturers and is continuously being expanded to include additional vehicle manufacturers.

With the update 2024/3.01 (planned for August 2024), ESI[tronic] Evolution users will be able to use the functionality and extended vehicle coverage to unlock Suzuki vehicles quickly and easily with access protection.

Using the Suzuki SDA solution does not require any special process steps. Registration with the SingleKey ID is not necessary and there are no additional costs.

The range of vehicle brands within SDA is growing continuously and already includes a large number of brands.

ESI[tronic] Evolution

Improving vehicle identification



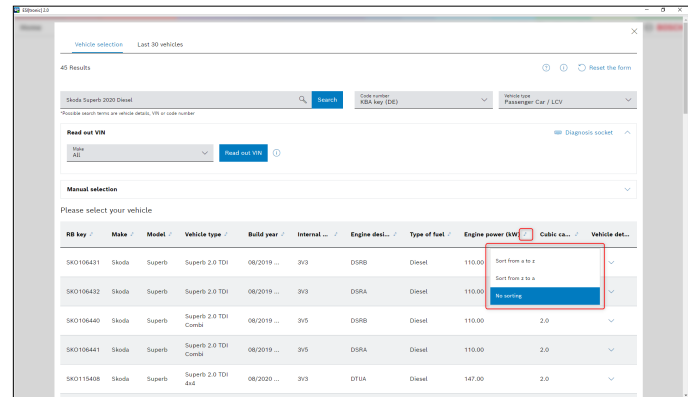
When searching for a vehicle, there may be several search results, depending on the vehicle type, brand and search details entered.

Sorting by individual vehicle parameters can be helpful here in order to be able to select the right vehicle quickly and easily from the list of results.

With the 2024/3 update, the ESI[tronic] Evolution receives an improved function within the vehicle identification.

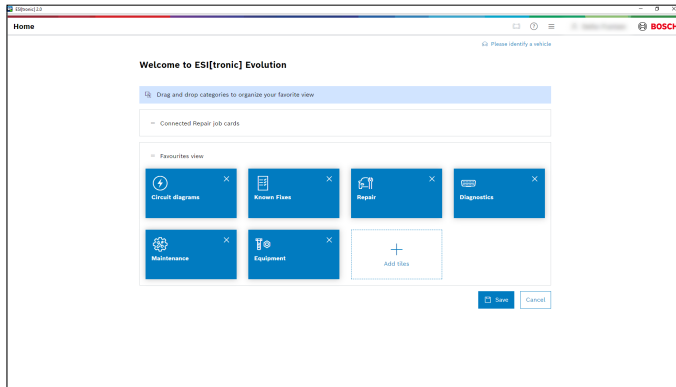
By clicking on the arrow next to the respective column name, the list of results of the vehicle search can be sorted and users can use the vehicle selection more efficiently.

This function is also available for the list of the 30 most recently accessed vehicles.



ESI[tronic] Evolution

Category order in favorites view can be customized



With the 2024/3 update, every logged-in user can now customize their favorites view even further.

By clicking on 'Edit', you can now not only define your own favorites, but also customize the order of the categories.

This is particularly helpful when working with Bosch Connected Repair cloud, so that the orders can be accessed without significant scrolling. To simplify everyday workshop life, another new feature is that the last activated view is saved for each user and automatically activated when logging in again, even if the ESI[tronic] software is restarted.

ESI[tronic] Evolution

Coverage for brand new vehicles



The initiative to quickly provide vehicle coverage for new vehicle models in ESI[tronic] Evolution continues. The following vehicle models have been created for you just a few weeks after their market launch:

Volkswagen Golf 8 Facelift (RB key: VWW0155814, VWW0155817, VWW0155819, VWW0155820, VWW0155821, VWW0155822, VWW0155824, VWW0155825, VWW0155826, VWW0155827, VWW0155829, VWW0155830)

Market launch: 06/2024

Availability in ESI[tronic]: 06/2024

Mercedes CLE Cabrio (RB key: MB 0155147, MB 0155148, MB 0155149, MB 0155150, MB 0155151, MB 0155152)

Market launch: 04/2024

Availability in ESI[tronic]: 06/2024

The focus is particularly on the systems and functions for the most important service and repair tasks for a new vehicle. The corresponding vehicle coverage will be made available to you through the usual updates via the Diagnostics Download Manager (DDM).

ESI[tronic] Truck News

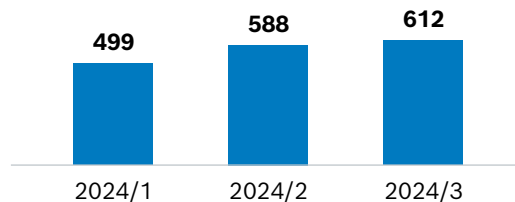


For our customers – we offer with the
ESI[tronic] Update 2024/3

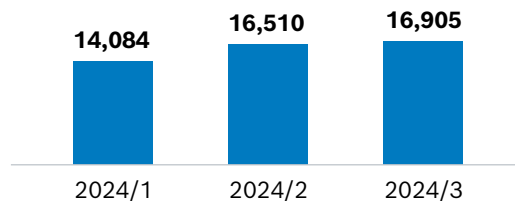
- 24 New makes
- 395 New models
- 3,982 New electronic control systems
- 4,576 New diagnostics capabilities
- 448 New wiring diagrams
- 56,258 New fault codes

More information about ESI[tronic] Truck can be found at:
boschaftermarket.com

Makes total



Models total



ESI[tronic] Truck News



Truck package

- **MERCEDES-BENZ:** OC 500 LE Euro 6e, OC 500 RF Euro 6e
- **IRISBUS:** Evadys E6, Evadys E6e & Magelys E6
- **MITSUBISHI FUSO:** CANTER, ADAS MPC Multifunction camera, system calibration in static mode

Agricultural vehicles package (OHV 1)

- **DEUTZ-FAHR:** Parameter setting in the MVCU computer for DEUTZ-FAHR 6 C TTV Series
- **SGARIBOLDI:** New Brand

Construction vehicles and engines package (OHV 2)

- **CATERPILLAR:** Calibrations of the solenoid valves of the hydraulic system for CATERPILLAR 400 Series
- **JCB:** New engine system JCB 448 Stage V

Material handling package (OHV 3)

- **JUNGHEINRICH:** Maintenance reset for JUNGHEINRICH EJE [2018 - ...] electrical pallet jacks and EJC electric stackers
- **JCB:** New engine system JCB 448 Stage V

Trailer

- **Haldex:** Speed test in HALDEX EB+4.0 brake control system