

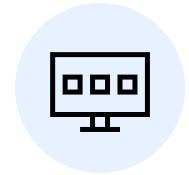


ESI[tronic] Evolution

News 2024 | 1

- The new start screen: Better overview, redesigned vehicle selection and favorite view
- Access to original documents from various vehicle manufacturers
- Bosch Connected Repair: Integrated directly into your start screen
- Secure Diagnostic Access: Nissan, Subaru and Polestar now part of SDA
- ESI[tronic] Truck News

The new start screen: Better overview, redesigned vehicle selection and favorite view

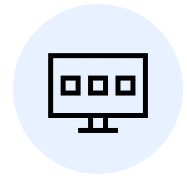


With the 2024/1 update, ESI[tronic] Evolution and the new start screen will be released for all users, including ESI[tronic] Truck & OHW.

The start screen offers a better overview, direct links to the most important diagnostic functions and documents and shows the mechanic the respective Jobcards from Bosch Connected Repair Cloud directly.

The vehicle selection has also been redesigned as part of this. In addition to familiar and proven functions, such as vehicle selection by reading out the vehicle identification number or with the help of the respective country identification key, it is now also possible to search for the desired vehicle using a free text field. Of course, it is still possible to select a vehicle manually.

The favorite view can be used to personalize the start screen so that only user-relevant functions are displayed after logging in. The favorite view can be adjusted at any time and activated and deactivated with just one click. This makes the ESI[tronic] Evolution even clearer and adapted to your needs.



Home

WVW4025 / VW (Volkswagen) / Passat 2.0 TDI CC / 357 / 2.0 l / 103.00 kw / 11/2010 ... 05/2012 / CFFB

Welcome to ESI[tronic] Evolution!

Select a new vehicle

ESITronic Evolution

- Diagnosis
- Maintenance
- Equipment
- HV battery (SOH)

Other useful diagnostics

- System overview
- Repair
- Service book
- Special OBD II
- Oil & fluids
- Oil Service (DSO)
- Workshops
- Special diagnosis

Other useful documents

- Service book
- Service specifications
- Technical data
- Adjustment
- 2023 VW Plate License
- Test Pressure
- Technical Data
- Timing Gears
- Timing belt
- Accessory Drive Belts
- Wheel Alignment
- Key Programming
- Maintenance journals

Connected Repair job cards

Home

WVW4025 / VW (Volkswagen) / Passat 2.0 TDI CC / 357 / 2.0 l / 103.00 kw / 11/2010 ... 05/2012 / CFFB

Welcome to ESI[tronic] Evolution!

Select a new vehicle

Favourite features

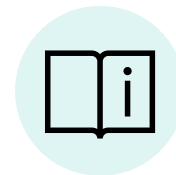
- Diagnosis
- Maintenance
- Equipment
- HV battery (SOH)
- Timing Gears

Connected Repair job cards

Number plate | **Audi A4 1.8 T** | Build year

Creation date: Nov 16, 2023

Access to original documents from various vehicle manufacturers



If you want to carry out maintenance and repair work professionally and efficiently in the workshop, you need the best possible information on the respective work steps reliably and quickly at hand.

With the update 2024/1, therefore there will be a whole new feature in addition to the innovations already mentioned.

The new ESI[tronic] Evolution includes the "Original Documents" function as a new and separate tile directly on the startscreen. This feature provides the user with all the information we have from the vehicle manufacturer, starting with VW and Audi. Availability will initially be limited to Europe. With further updates, brands with global coverage will follow.

Literally at the touch of a button and first-hand directly from the vehicle manufacturer.

In a separate window, the user can then browse and view original circuit diagrams or manuals, among other things. Thanks to the pre-structured presentation the user can quickly and easily navigate through the information and search for specific content.

Best of all, this information is included directly in your SIS license and can be used without separate licensing.



Home

ES[tronic] Evolution

Welcome to ESI[tronic] Evolution!

Select a new vehicle

ES[tronic] Evolution

Diagrams > Search > Maintenance > Manuals >

Circuit diagrams > Screen Files > Equipment > Vehicle info >

Original documents >

Direct access diagnosis

System overview > Repair > Service task > Global OBD II >

Original Documents

Pre-release version - The original documents are not yet available in their final amount.

Home > Original Documents

Search

Enter a search term

Clear all

Vehicle Identification
Make: VW
Model: T22 - eco up!
Year: CH28
Transmission: OK9

Category

- Body Repairs
- Control line diagrams
- Maintenance
- Workshop Manual

Body Repairs (00 Technical data / Alignment) > Alignment [g]
Make: VW - 604 Nbr. Engine - * Transmission *

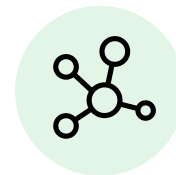
Body Repairs (00 Technical data / Alignment) > Overview
Overview
Make: VW - 604 Nbr. Engine - * Transmission *

Body Repairs (00 Technical data / Alignment) > Partial range
Partial range
Make: VW - 604 Nbr. Engine - * Transmission *

Body Repairs (00 Technical data / Basic Information)
Basic Information
Make: VW - 604 Nbr. Engine - * Transmission *

Body Repairs (00 Technical data / Body dimensions)
Body dimensions
Make: VW - 604 Nbr. Engine - * Transmission *

Bosch Connected Repair: Integrated directly into your start screen







In addition to the innovations mentioned above, the ESI[tronic] Evolution also includes the functions of the network solution Bosch Connected Repair Cloud.

In the future, Bosch Connected Repair Cloud will be integrated directly into the startscreen. The open work items can then be started, edited and completed directly from the ESI[tronic] Evolution.

With this solution, the workshop devices are connected to each other, and their data is stored in the central Bosch Cloud. This eliminates the need for your own local server and local data storage.

If you want to continue using an existing Bosch Connected Repair variant with a local server, this is also possible, but without integration into the startscreen.

Connected Repair job cards ^	
 D-GH 3101 Mercedes-Benz E 200 D Build year <small>Creation date: Nov 15, 2023</small>	▼
 L - ES 2438 AUDI A5 2.7 TDI Sportback Build year <small>Creation date: Nov 15, 2023</small>	▼
 Number plate BMW 3 Touring Build year <small>Creation date: Nov 15, 2023</small>	▼
 S - TH 3101 VW (VOLKSWAGEN) Tiguan Build year <small>Creation date: Nov 15, 2023</small>	▼

Secure Diagnostic Access: Nissan, Subaru and Polestar now part of SDA



As a central solution integrated into the ESI[tronic] Evolution control unit diagnostic license (SD), Secure Diagnostic Access (SDA) enables comprehensive access to protected vehicle data from participating vehicle manufacturers and is continually being expanded by other vehicle manufacturers.

Since the last quarter of 2023, users have had the functionality to unlock access-protected vehicle data from three new vehicle manufacturers: Nissan, Subaru and Polestar.

To use the Nissan SDA solution, you must log in with your personal SingleKey ID.

Using the Subaru and Polestar solution does not require any special process steps. Due to technical circumstances, registration with the SingleKey ID is not required. There are no separate costs for the user for all three SDA solutions.

The scope of vehicle brands within SDA is continuously growing and already includes a large number of brands.

ESI[tronic] Evolution for Truck/OHW

ESI[tronic] Truck News

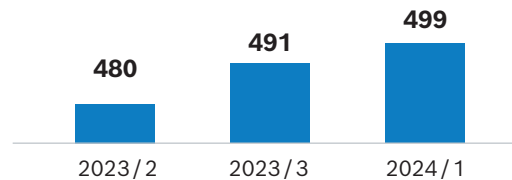


For our customers – we offer with the ESI[tronic]
Update 2024/1

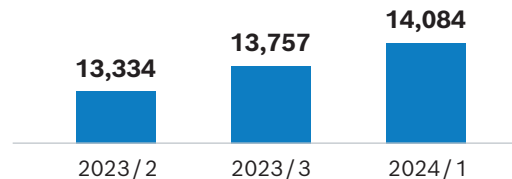
- 8 new makes
- 327 new models
- 3,086 new electronic control systems
- 2,028 new diagnostics capabilities
- 207 new wiring diagrams
- 52,150 new fault codes

More information about ESI[tronic] Truck can be found at: www.boschaftermarket.com

Makes total



Models total



ESI[tronic] Evolution for Truck/OHW

ESI[tronic] Truck News



Truck package:

- **Wabco:** Trailer EBS E6.5
- **IVECO / IRISBUS** from 2022: Coding of injection nozzles, resetting oil service in S-Way, T-Way and X-Way
- **MERCEDES-BENZ** eCITARO: New functions
- **DAF** XD, XF, XG/ XG+ from 2021: New maintenance system

Agricultural vehicles package (OHV 1):

- **FENDT** 900 Vario (GEN6): New ICU injection control system, engine: MAN – Final Tier 4/Stage IV
- **JOHN DEERE** 7R, 8R, 9R: DPF cleaning and error code clearance of the exhaust gas aftertreatment system
- **VALTRA:** Individual calibrations of the TC PS gearbox and clutches

Construction vehicles and engines package (OHV 2):

- **LIEBHERR:** New ECU3 engine control system
- **CATERPILLAR** 900 Serie: New advanced actions in the MCM central computer
- **HATZ:** New EDC17 C81 engine control system
- **DOOSAN:** EDC DM02 / DM03 engine control system

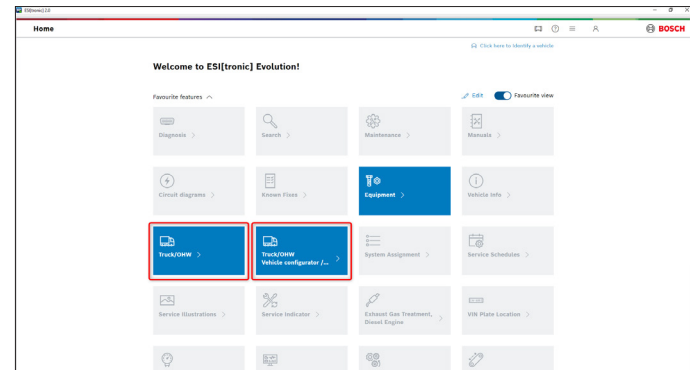
ESI[tronic] Evolution for Truck/OHW

The new start screen – easy access to Truck / OHW and vehicle configurator



The start screen offers a better overview, direct access to Truck / OHW and the vehicle configurator. With Evolution – you not only work faster and easier, but also more user-friendly and above all, clearer.

The contents of System/Manufacturer – from ESI[tronic] 2.0 Online have been moved to the Vehicle Configurator.



ESI[tronic] Evolution for Truck/OHW

New adapter cable available!



Manufacturer	Part number	Application	Description
Liebherr	1 684 465 891	OHW	Rectangular 6-Pin
Linde	1 684 465 892	OHW	Round 7-Pin
Carrier	1 684 465 906	Trailer	Carrier CAN
Liebherr	1 684 465 907	OHW	Ethernet Cable
Hyundai	1 684 465 908	OHW	Robex
Isuzu/Hitachi	1 684 465 909	OHW	8-Pin
Isuzu/Hitachi	1 684 465 910	OHW	6-Pin

